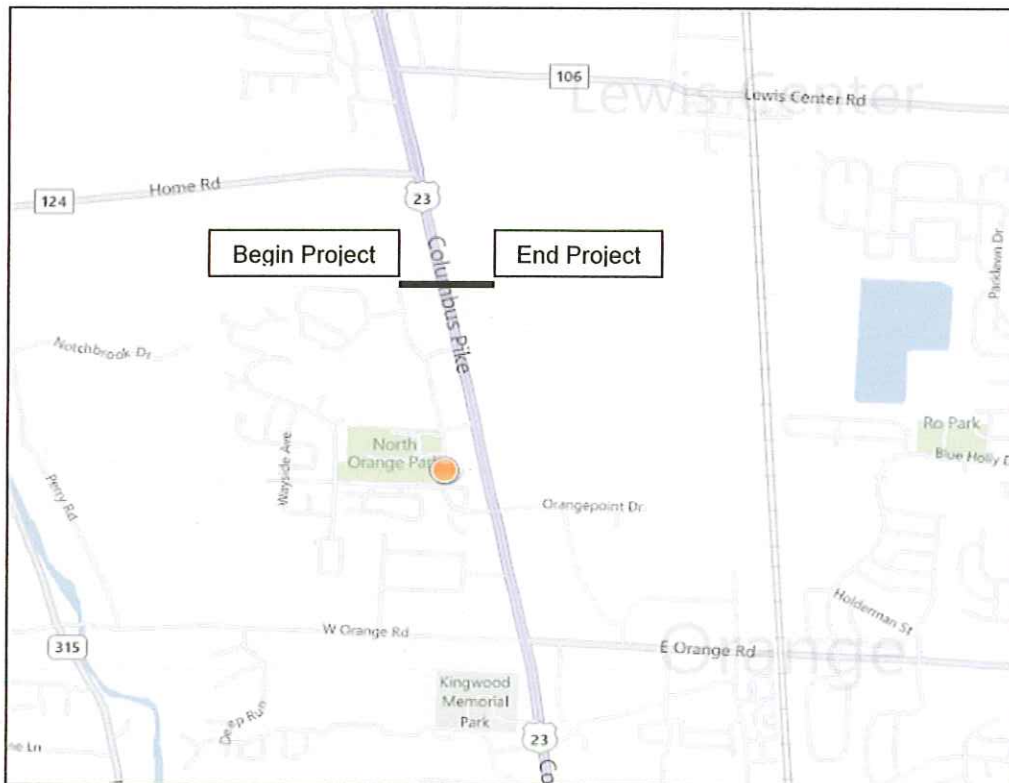




**Orange Township Bike/Pedestrian Bridge over US 23
DEL-US 23-Graphics Way Trail PID 90821
Public Information Meeting to be Held
Orange Township Hall
1680 East Orange Road
Lewis Center, Ohio 43035
March 13, 2012 from 6 to 8 p.m.**

Purpose of the Public Information Meeting

This meeting is being held to inform all interested parties regarding the Orange Township and The Ohio Department of Transportation's (ODOT's) proposal to provide a bicycle/pedestrian bridge that spans over US 23. The location of the proposed project is shown below.



Format of the Meeting

This meeting will be an informal open house style meeting. Interested persons are encouraged to provide comments to the Orange Township and ODOT representatives regarding the proposed bicycle/pedestrian bridge.

Purpose and Need for the Project

The completion of the connector bridge will act not only as a way of non-motorized travelers to cross US 23 and reach North Orange Park, but will also offer linkage to Alum Creek State Park, Highbanks Metro Park, and Delaware Preservation Parks District new "Big Run Preserve" via existing/future Orange Township trail ways. US 23 is a formidable barrier preventing safe non-motorized east-west travel between community facilities, such as an aquatic facility, youth sports parks, neighborhoods and many schools.

The heavy, high-speed traffic on US 23 does not provide a safe or comfortable environment for the crossing of non-motorized traffic. Within Orange Township's trail plan is the intent to decrease the need for the use of motorized vehicles to reduce traffic congestion, improve air quality and increase the ability for families to travel safely throughout the township. Pedestrian and bicycle traffic will only increase as the population grows and the need for safe access to and from youth athletic and aquatic facilities increases.

Project Description

The proposed project consists of a Multi-span bicycle/pedestrian bridge crossing of US 23 just north of the Delaware County Library between Home Road and Orange Road. This bridge will tie into the existing and proposed sections of the Orange Township Trail system.

Some permanent right-of-way acquisition will be required. Maintenance of traffic during bridge erection over US 23 will be handled at night with short duration lane closures and local traffic to all businesses and residences will be maintained.

Environmental Considerations

Environmental studies are currently ongoing to identify significant features and resources such as flood plains, wetlands, cultural resources and hazardous material or waste sites. All efforts will be given to minimize the harm to the environment.

Design Considerations

Three crossing locations were studied to determine the most appropriate location based on safety, function, environmental impacts and financial reasons. The crossing location being presented was ultimately chosen and approved by Orange Township, ODOT and affected property owners.

The preliminary engineering design has been complete to date. This stage is used to identify the project footprint, investigate environmental issues, determine utility conflicts, right-of-way impacts and allow for the development of a construction cost estimate.

Comments

Please provide comments to the Township and ODOT representatives during the meeting. Comment sheets will be provided to provide written comments. Comments will be accepted through March 27, 2012.

The Next Step

Comments from the public meeting will be compiled and reviewed as part of the public involvement process. The Township will provide a response to all written comments before the detailed design plans are developed.